



## BRING YOUR LAB INTO THE 21ST CENTURY

Replace your old, noisy, obsolete benchtop centrifuge with a NEW Beckman Coulter benchtop centrifuge through ESBE Scientific.

Contact Your Local ESBE Rep for new  
& exciting offers on Centrifuges



Offer valid till 31 Dec. 2019

## NEW AVANTI J-15 SERIES

Part of a new family of life science equipment that provides exceptional performance you expect from Beckman Coulter.

### Optimize your workflow

- Ultra Harmonic Technology
  - Time savings
  - Achieve efficiencies up to 10%<sup>1</sup>

### Obtain a higher yield

- Soft Pellet Deceleration
  - Protects sample
  - Results in increased sample yield

### Walk away with confidence

- Optimized Sensitivity
  - Detects rotor imbalance within 30 seconds
  - Reduces false diagnostics

### Ease-of-use and fast accessibility

- Icon usability and intuitive display on high-contrast color LCD screen

**5-year warranty (Avanti J-15R)**

**3-year warranty (Avanti J-15)**

<sup>1</sup> Compared to the Allegra X-14R.

**BRILLIANCE**  
*at every turn.*



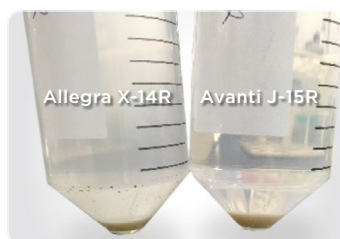
JA-10.100 Rotor



Aerosolve Cannisters



JS-4.750μ Rotor  
(Microplates and microplate covers not included)



Visual comparison between  
Allegra X-14R and Avanti J-15R  
samples.



JS-4.750 Rotor  
(Bucket covers and bottles not included)



## ALLEGRA X-30 SERIES

- Highest speed and *g*-force in its class\*
- 13 rotors to choose from for various applications
- At only 18.1 inches across, this versatile unit can turn any tight space into a workhorse
- Available in four application packages
- 5-year warranty (Allegra X-30R)
- 3-year warranty (Allegra X-30)



Allegra X-30R



SX4400 rotor  
(Tubes not included.)



F2402H rotor  
(Tubes not included.)

## MICROFUGE 16

- The economical, small footprint, non-refrigerated Microfuge 16 can spin up to 24 1.5/2.0 mL tubes



S6096 rotor  
(Microplates not included.)



SX4400 rotor  
(Tubes not included.)

## MICROFUGE 20/20R

- Refrigerated and non-refrigerated units available for your lab's microfuge needs
- Spins 36 x 1.5/2.0 mL tubes in the BioCertified\*\* FA361.5 fixed angle rotor

Beckman Coulter is committed to offering excellent benchtop centrifuges with outstanding on-site service.

**Contact your local ESBE Scientific rep today!**

**Offer valid till 31 Dec. 2019**



Microfuge 16

FA241.5P rotor  
(Tubes not included.)



Microfuge 20

Microfuge 20R



**ESBE Scientific**

1.800.268.3477  
esbe.com

Prices and product details are current when published; subject to change without notice. Certain products may be limited by federal, provincial, or local regulations. ESBE Scientific makes no claims or warranties concerning sustainable/green products are the sole claims of the manufacturer and not those of ESBE Scientific Industries Inc. All prices are in CAD dollars unless otherwise noted. Offers valid in Canada, void where prohibited by law or company policy, while supplies last. ESBE Scientific, the ESBE logo and variations on the foregoing are registered (\*) or unregistered trademarks and service marks, of ESBE Scientific Industries Inc. All other marks referenced are registered by the respective owner(s). Visit [esbe.com](http://esbe.com) to view our privacy policy, trademark owners and additional disclaimers. © 2019 ESBE Scientific Industries Inc. All rights reserved.



\* Allegra X-30R with F2402H fixed-angle rotor

\*\* **BioC** BioCertified is a term used to describe our products which have been tested and validated to demonstrate containment of microbiological aerosols by an independent, third-party facility (Health Protection Agency, Porton Down, UK or USAMRIID, Ft. Detrick, MD, USA). Improper use or maintenance may affect seal integrity and thus, containment. All other trademarks are the property of their respective owners.

© 2019 Beckman Coulter, Inc. All rights reserved. Beckman Coulter, the stylized logo, and the Beckman Coulter product and service marks used herein are trademarks or registered trademarks of Beckman Coulter, Inc. in the United States and other countries.

CENT-5621FLY0719